

Welcome!



# The Bridge

## PROVIDENCE

COMMUNITY HEALTH CENTERS

[www.providencechc.com](http://www.providencechc.com)

## New PCHC Health Center Location Is Underway

### Dear Friends of Providence Community Health Centers:

Welcome to the second issue of the Providence Community Health Centers' (PCHC) newsletter, The Bridge. As PCHC continues its community outreach, we have received much interest in our organization, affiliations, constituents and plans.

Here are answers to some of the most common questions we've been asked:

- PCHC has five locations throughout Providence, including Allen Berry, Capitol Hill, Central, Olneyville, and Fox Point Health Centers, plus our administrative headquarters. In addition we have a clinic at Mt. Pleasant High School, an STD clinic, and a prison-based clinic at the ACI in Cranston.
- PCHC's major affiliations are with Neighborhood Health Plan, Blue Cross/Blue Shield, United Health and Delta Dental.
- PCHC is an independent, non-profit charitable organization that works as an unbiased partner with many community-based organizations, including Hasbro Children's, Women and Infants, Roger Williams and Rhode Island Hospitals
- PCHC's board members are also our patients! Fifty-one percent of our board members represent the patient community.

We welcome your feedback and questions. I look forward to seeing you at our Fundraising Dinner in November and keeping you attuned to PCHC developments through The Bridge. On behalf of the entire PCHC staff, I want to thank you again for your continued support.

Sincerely,

Merrill Thomas  
CEO



Tearing Down the Old to Build the New: Demolition and clearing has begun on the site of the new 375 Allens Ave. Clinic

PCHC is pleased to announce that work has begun on a proposed 11,000 square foot facility that will provide more services to more of our constituents. Located at 375 Allens Ave., the new site will replace the Fox Point Health Center currently located in the Boys and Girls Club on Wickenden Street in Providence, which we have outgrown.

Centrally located, the new clinic will be accessible via public transportation or the PCHC van service, and will also have ample free parking available to patients.

"This is exciting news for PCHC and the Providence community," commented Mary Jones, Chairwoman of PCHC. "The staff will be able to serve many more patients than we could at the Fox Point location, and we'll be able to offer an increase in services such as prenatal care, adult medicine, pediatrics, lab services and urgent care."

It is anticipated that the expanded health center will create new job opportunities for physicians and support staff. The architectural firm Vision III of Providence is working with PCHC on planning the facility and surrounding grounds. If you would like more details, please contact us – and watch for updates in upcoming issues of The Bridge!

## Dancers and Diners Wanted!

Join PCHC at Our First Dinner/Dance Fundraising Event

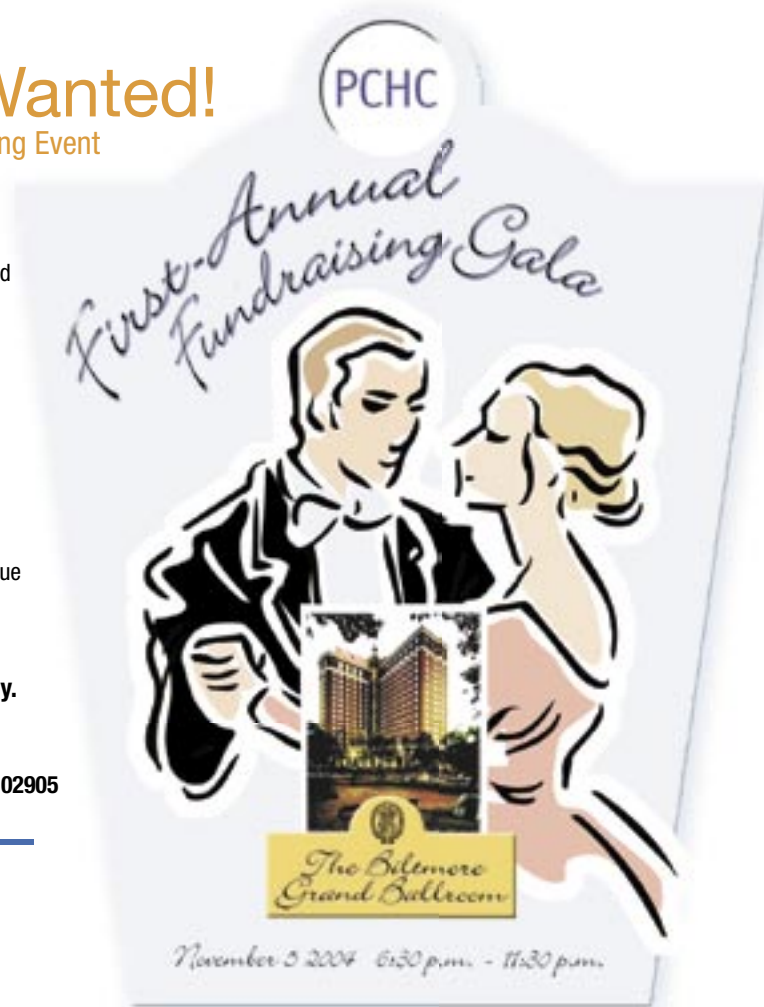
Join PCHC staff, past and present board members, volunteers, our special guest Rep. Steve Costantino, and fellow PCHC supporters at The Biltmore Grand Ballroom on November 5, 2004 from 6:30 p.m.–11:30 p.m. for our gala event.

This first-ever fundraising event is being held to raise money for the Allen Berry, Capitol Hill, Central, Olneyville, Fox Point, Whitmarsh and Dental Clinics that serve Providence residents. All proceeds raised during our gala event will directly benefit these community clinics that meet the needs of over 32,000 patients a year – regardless of their insurance or financial situations.

Your participation in or donation to this fundraising event helps PCHC continue to serve the children, men and women who depend on our care.

**Make this a night to remember! Purchase your tickets today.**

Call 401-444-0400 x 3148 or send a contribution to:  
Providence Community Health Center, 375 Allens Ave., Providence, RI 02905  
Attention: Loretta Tharp



### PCHC Mission Statement

**"Provide neighborhood-based, high quality and accessible primary medical care to improve the health status of the residents of Providence and surrounding communities, regardless of their ability to pay."**



375 Allens Avenue  
Providence, RI 02905



## Highlight on Special Services

### Reach Out and Read with PCHC

PCHC is pleased to announce that all of our pediatric departments support the Reach Out and Read (ROR) program. ROR promotes early literacy by bringing new books and advice about the importance of reading aloud into the pediatric exam room.

PCHC's Central Health Center started the Reach Out and Read program in April 2002 with the Allen Berry Health Center following in 2003. The remaining PCHCs joined the Reach Out and Read program this year.

Since adopting the program two years ago, PCHC has distributed 14,142 books to over 4,000 families. "We are pleased that we can offer such a program. The volunteers in our community have made the Reach Out and Read program all the more successful," noted Merrill Thomas, CEO. "People from all walks of life have taken the time to read to our children, helping them get a healthy start on their early education."

Many volunteers have helped make the ROR program a success, including those from NHPRI and Brown Rudnick. PCHC physicians and nurses give new books to children at each well-child visit from 6 months of age to 5 years, and accompany these books with developmentally appropriate advice to parents about reading aloud with their child. The ROR program model is based on research that shows a connection between the frequency of sharing books with babies, toddlers and young children and enhanced language development.

A national, non-profit literacy organization, Reach Out and Read is affiliated with the Department of Pediatrics, Boston Medical Center, and Boston University School of Medicine.

**For more information, or to make a donation to the Reach Out and Read program at PCHC, contact us at 401-444-0400.**



## New Dental Clinic to Open on Broad Street

Providence children have something to smile about! Progress is being made on the new PCHC dental clinic, which will open toward the end of 2004. Funded in large part by grants from the Rhode Island Oral Health Access Project and the Ronald McDonald House Charities of Eastern New England, the dental clinic will be located in the Broad Med Building on Broad Street in Providence.

Boasting three examination rooms with state-of-the-art equipment, the clinic will be operated by a full time dentist and dental hygienist. PCHC has recruited Dr. David Blanco, a well-seasoned bilingual Spanish provider who has served as a dental director in a similar inner city community. The PCHC dental clinic will offer oral exams, fluoride treatments, sealants, dental cleanings, oral hygiene instruction, patient education, and dental repairs. Services will be available to all children who are patients of PCHC, regardless of the caretaker's ability to pay.

"It is gratifying to see so much progress being made on this critical initiative," stated Marie Ghazal, vice president, patient care and services. "I am especially grateful to the Rhode Island Dental Association, whose members have helped us with the design, processes, procedures and systems that will ensure the clinic operates smoothly and efficiently."



### Support the Providence Community Health Centers!

PCHC provides prenatal, Ob/Gyn, pediatric, adolescent, adult medicine and specialty care services to over 32,000 residents at five health centers in the City of Providence. To provide these quality services and to continue to attract and retain our quality staff of over 200 doctors, nurses, clinicians and administrators, we need your support!

Please take a moment to support your community by making a tax-deductible donation to The Providence Community Health Centers. Your funds will go directly to providing such necessary services as asthma and diabetes treatment programs, cancer screenings, blood pressure screenings, and physical examinations for infants, adolescents and adults within the Providence community.

**Make your tax-deductible check payable to:  
The Providence Community Health Centers, Inc.**

**Thank you for your generosity and support.**



## PCHC Chairwoman Mary Jones Wins National Community Health Care Award of Excellence

The National Association of Community Health Centers, Inc. recently presented Mary Jones, a long-time member of the PCHC Board of Directors, with the Ethel Bond Memorial Consumer Award. This national award is presented to one individual who serves on a community health center board, shows involvement in the development of a health care center, and is dedicated to the community health center movement over a period of time.

"Mary well deserves this award as she was one of the original founding community leaders that helped start the Rhode Island Community Health Centers 35 years ago," said Merrill Thomas, CEO. "She continues to serve today with relentless passion. Over the years Mary has been at the helm acting as a conduit to improve the health care of her community."

Mary's dedication includes marching for support of the centers in the 1960's, hiring executive directors, encouraging and mentoring volunteers, speaking on behalf of community health centers in Washington, DC and at the State House, and keeping the organization on track with its mission.

From the hearts of all at PCHC who have witnessed Mary's efforts, we say congratulations on this well-deserved recognition!

#### Board of Directors

To continue our commitment to be the bridge to quality care and good health in Providence, 51% of PCHC Board Members are also our patients.

Melahi Briggs  
Ms. Lori Goines  
James H. Hardy, Esq.  
Mary Jones, Chairwoman  
Dr. Hugh F. Lena  
Elizabeth Melendez  
Keo Prathep  
Michael J. Ryan  
Ms. Mary Seneres  
Dr. Daniel Sousa  
Kathleen A. Souza  
Mary Dowd Struck  
Thomas Twitchell  
Christina Zarfagna

#### Senior Staff

Merrill R. Thomas  
Chief Executive Officer

Stanley Hoyt Block, M.D. FAAP  
Medical Director

Antoinette Byda Day, SPHR  
Vice President, Human Resources

J. Stephen Foley, Jr.  
Vice President, Chief Information Officer

Mary Jean Francis, RN, M.S.  
Vice President, Performance Improvement

Marie Ghazal, RN, M.S.  
Vice President, Patient Care and Nursing Services

Elaine Hardman  
Vice President, Chief Operations Officer

Jack Taylor  
Vice President, Chief Finance Officer

Loretta L. Tharp  
Director, Income Development and Public Relations

### PCHC LOCATIONS

**Administrative Offices**  
275 Allens Avenue  
401-444-0400

**Allen Berry Health Center**  
202 Prairie Avenue  
401-444-0570

**Capitol Hill Health Center**  
40 Candace Street  
401-444-0550

**Central Health Center**  
239 Cranston Street  
401-444-0580

**Fox Point Health Center**  
550 Wickenden Street  
401-444-0530

**Olneyville Health Center**  
100 Curtis Street  
401-444-0540

**Whitmarsh STD Clinic**  
557 Broad Street  
401-444-0483

Visit us at [www.providencechc.com](http://www.providencechc.com) or call 401-444-0400

## Providence CHC Fast Facts

### Did you know...

Do you know what makes PCHC unique from other non-profit organizations? Unlike other non-profit organizations with a board of directors, PCHC is mandated that its board of directors must represent the communities in which they are located.

In order to meet this unique and critical mission, 51% of the PCHC board members are individuals that use our health care centers for their primary care. This means that decisions made by the board of directors of PCHC are made primarily by the patients. Our board members share the unique perspective of depending on the centers for their healthcare, understanding the needs of the communities, and aligning themselves with the overall welfare of PCHC patients. This unique viewpoint means that better, faster, and more knowledgeable decisions are made that directly benefit all of our constituents.

The remainder of the PCHC Board is composed of representatives from the Providence community who are committed to quality care for the City's residents.